

Barco portacontenedores

Tipo post-panamax

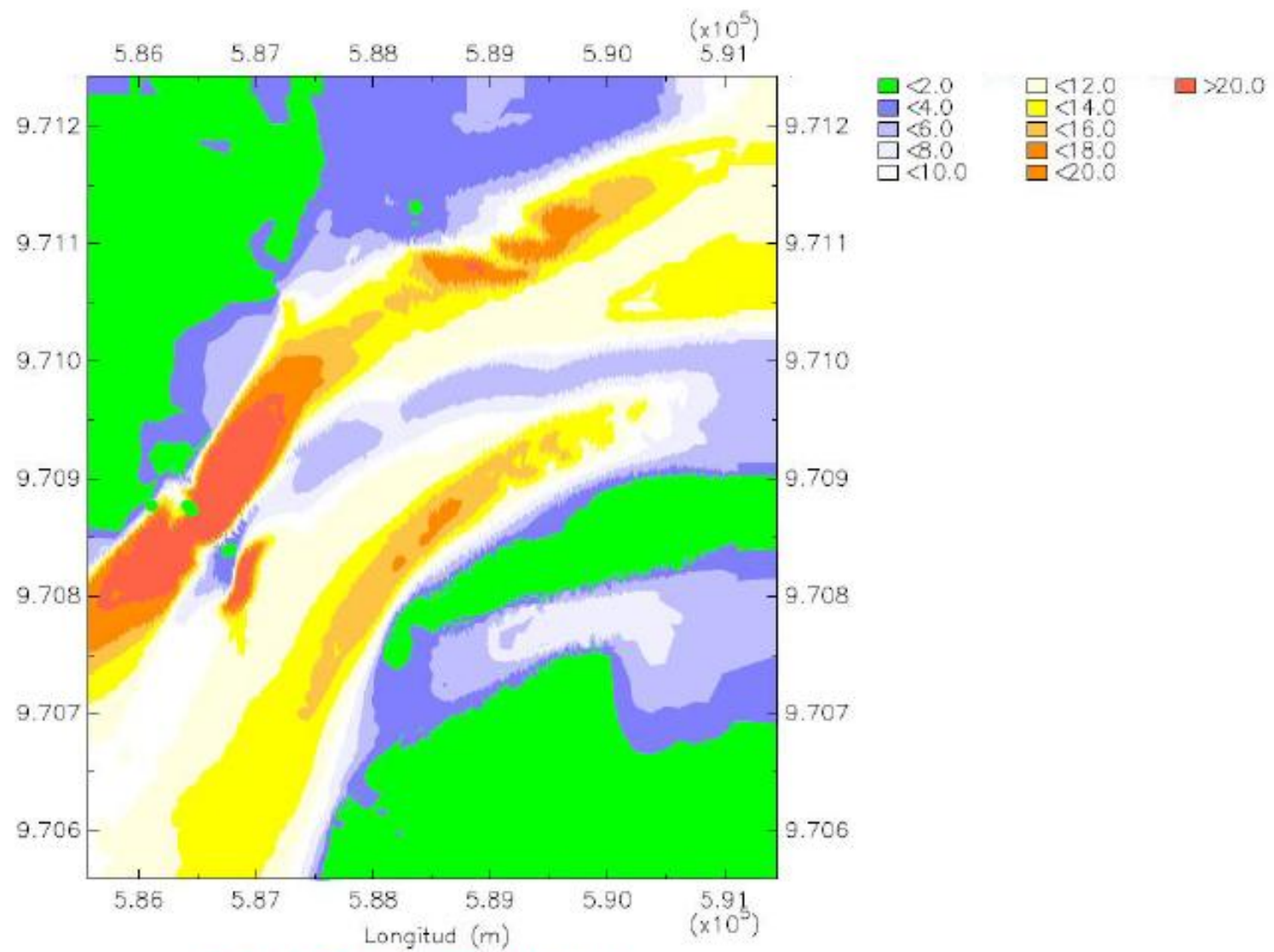
Eslora: 318.20 m

Manga: 42.800 m

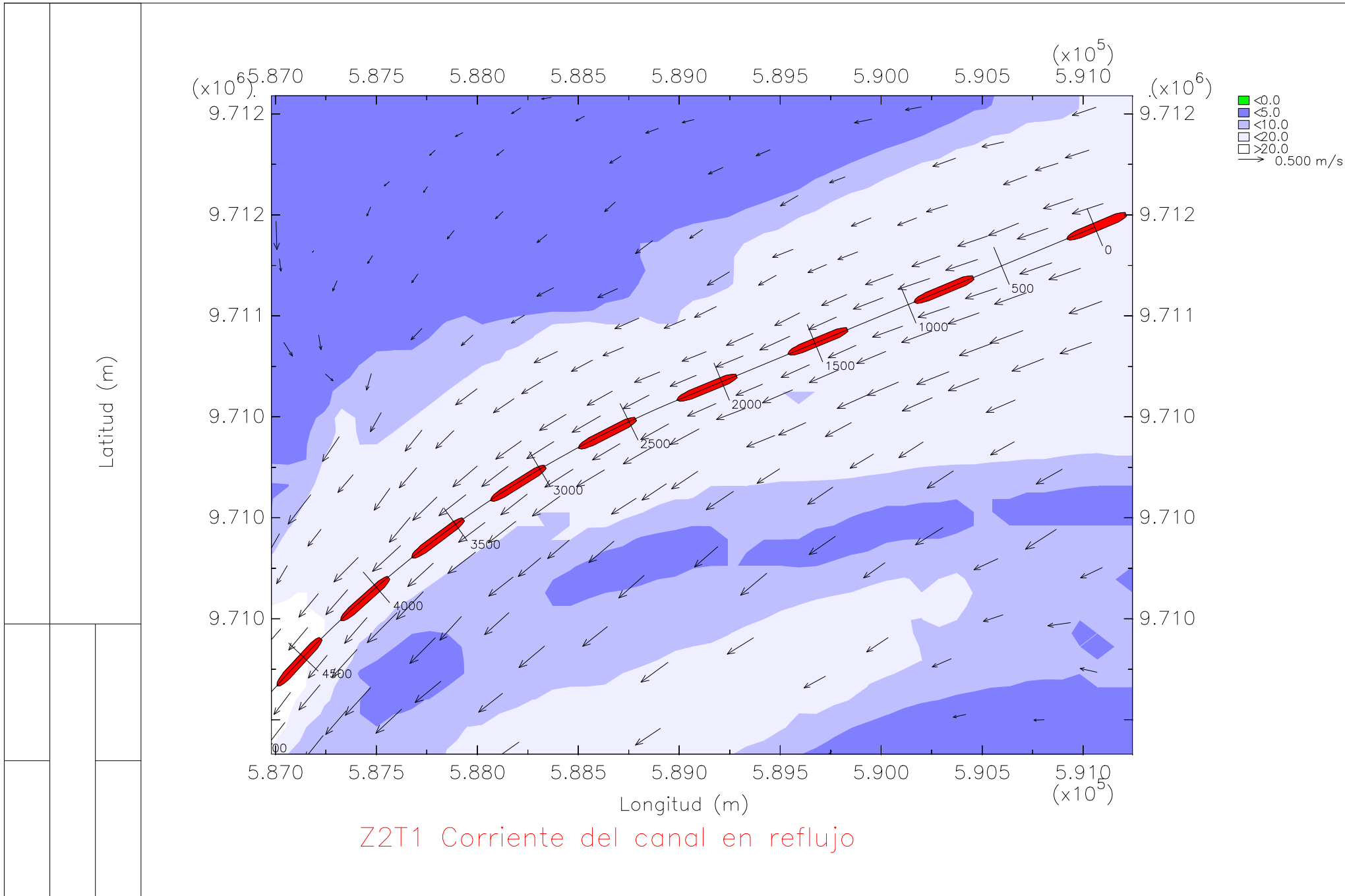
Calado: 11.60 m

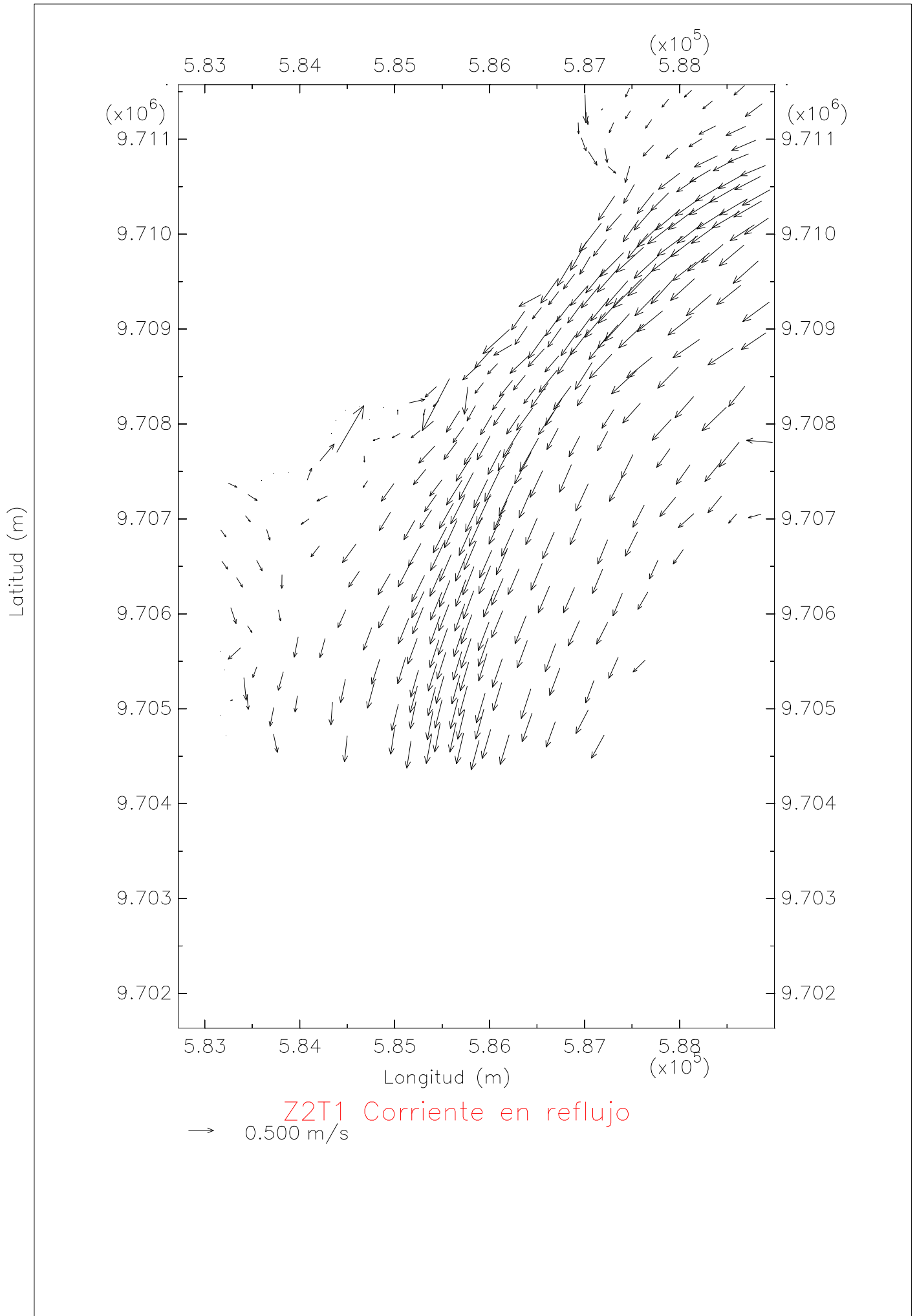
En la zona 2, tramo 1

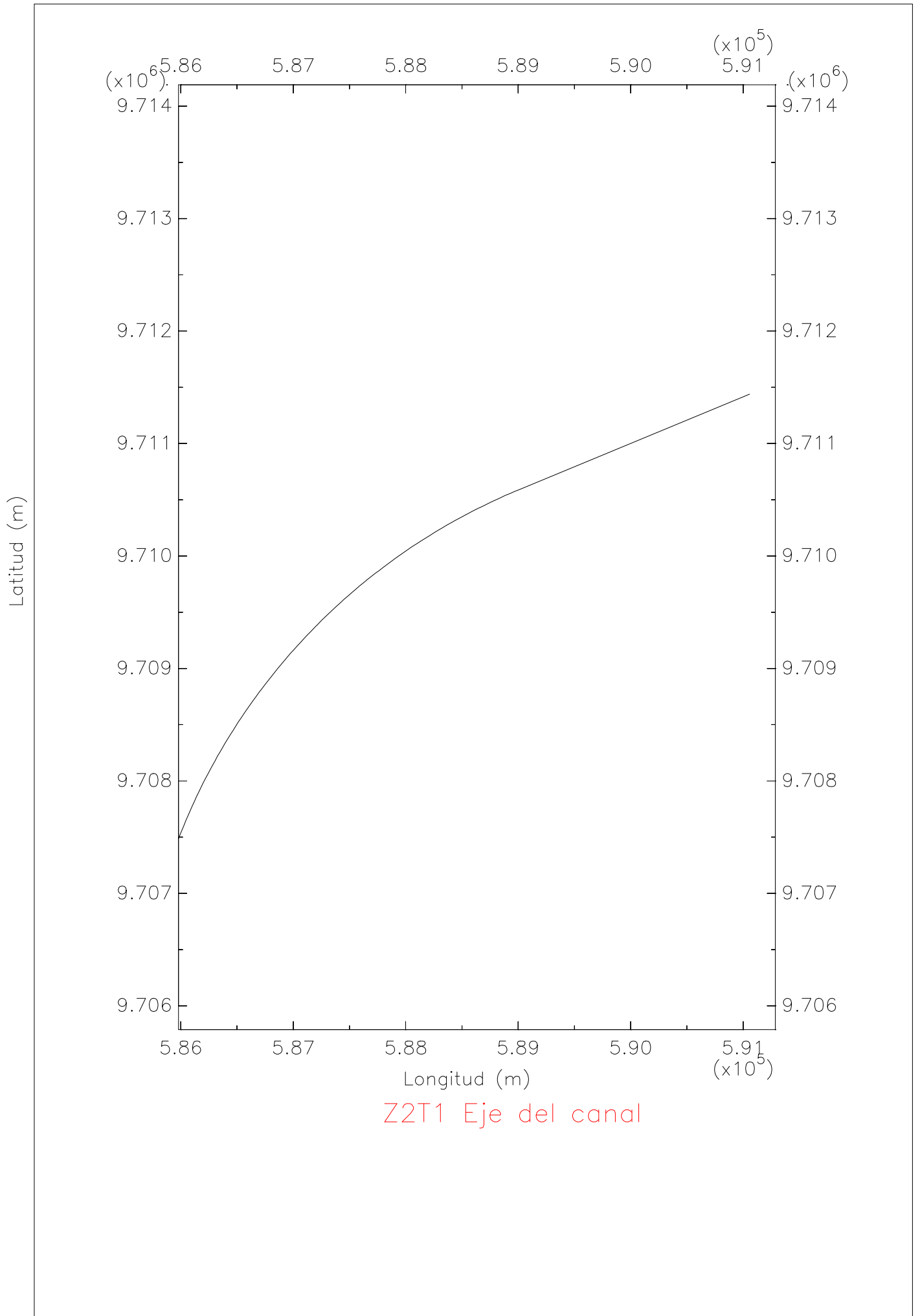
Bajo condiciones de vaciante

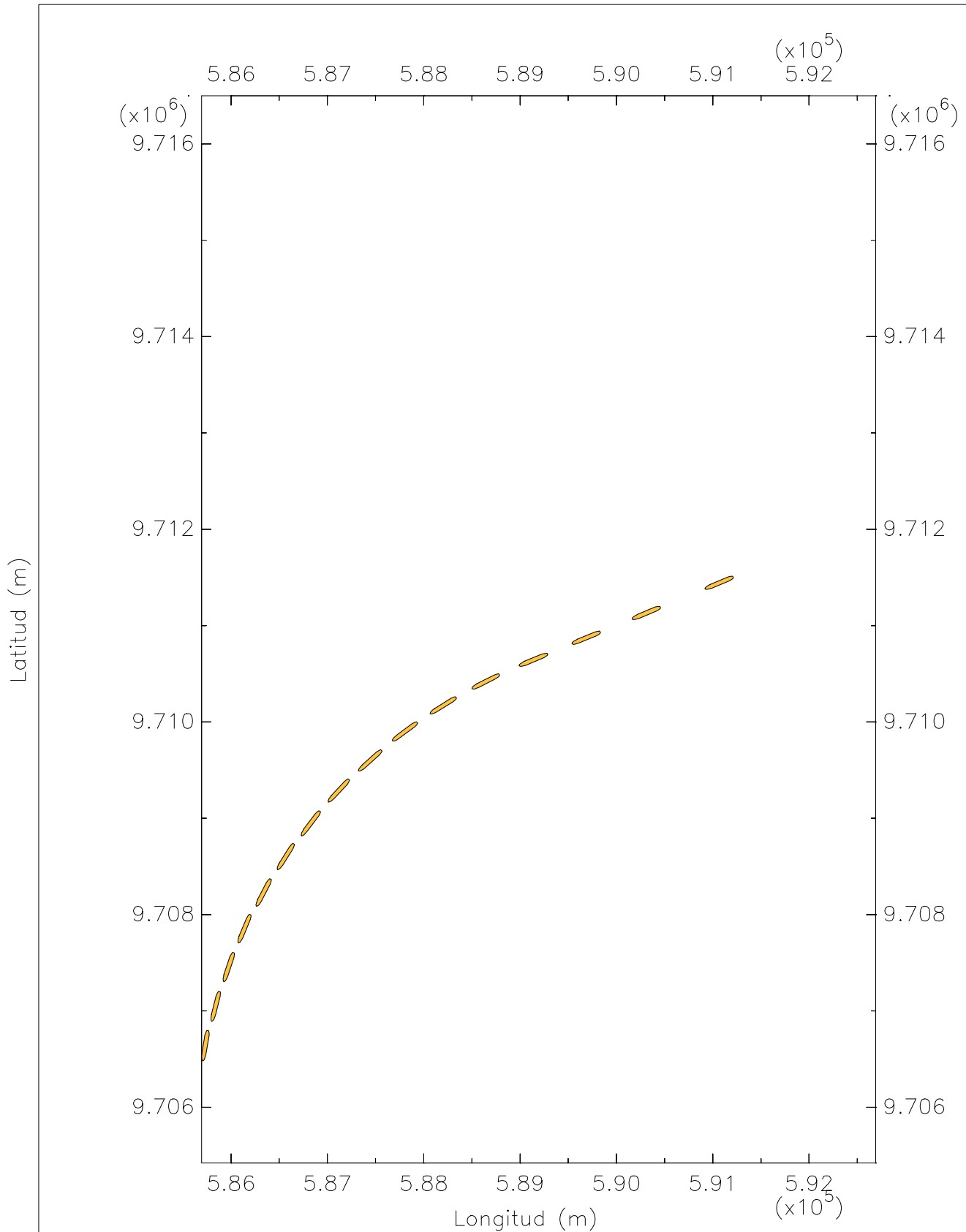


Zona 2 Tramo 1 Profundidad



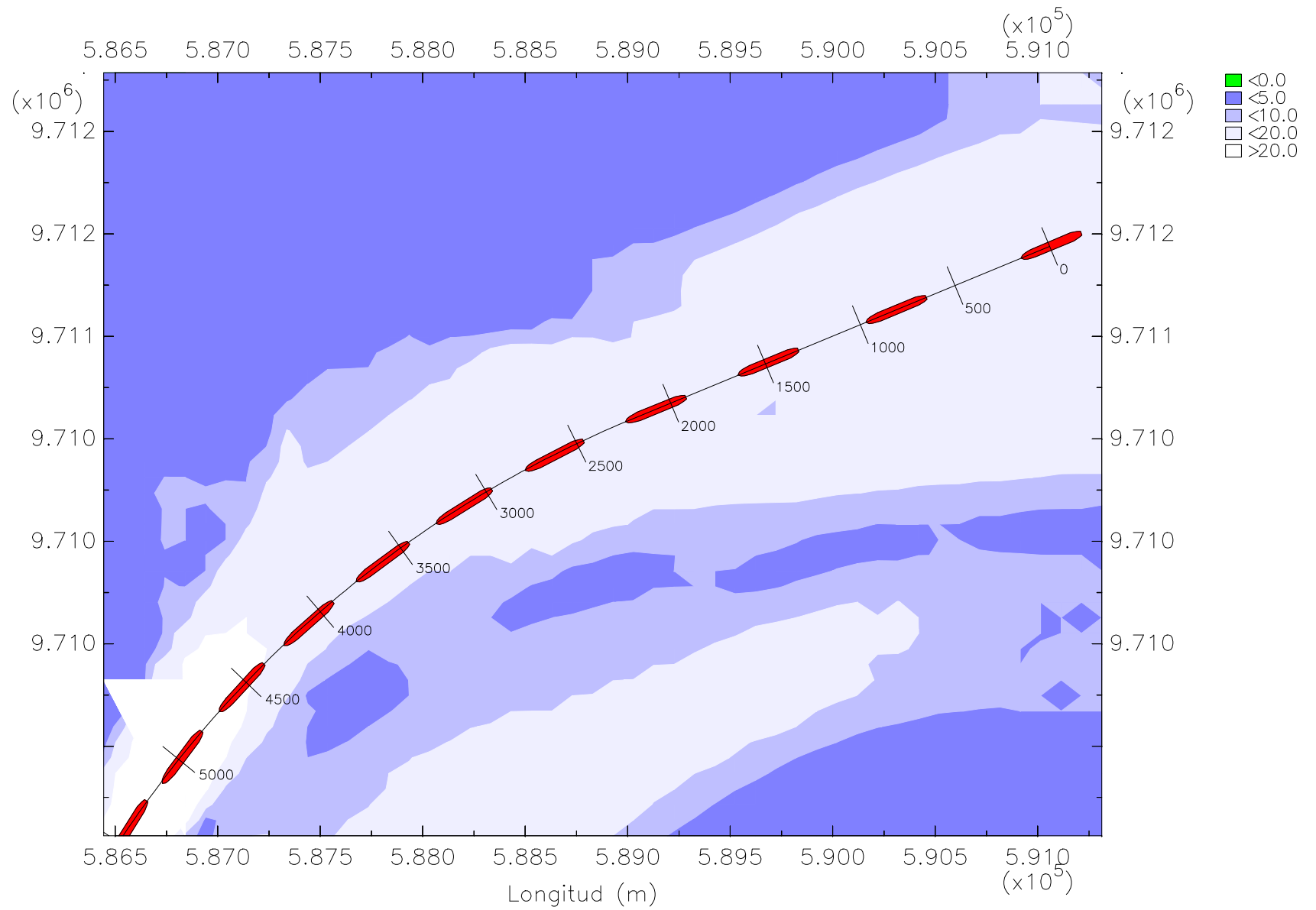






Z2T1 Trayectoria del barco portacontenedores post-panamax

Latitud (m)



Z2T1 Trayectoria del barco portacontenedores post-panamax